

aryaka SOTW 2020

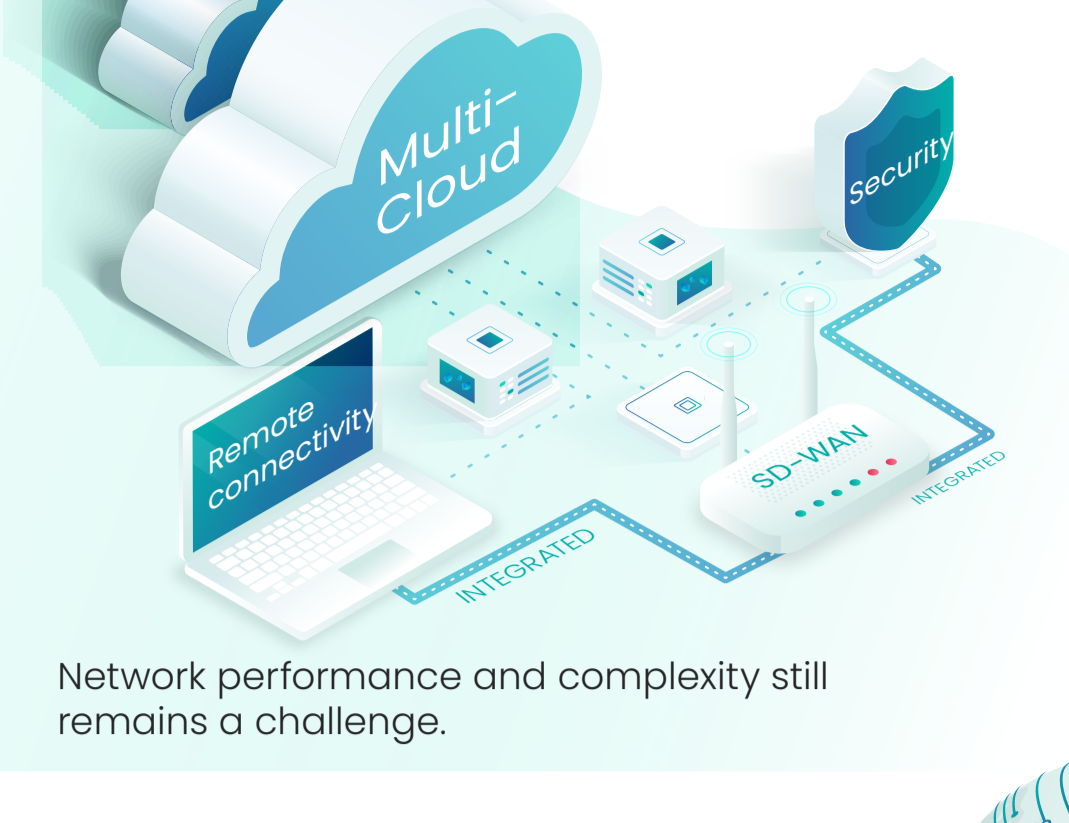
Global State Of The WAN

2020

4TH ANNUAL

AS MULTI-CLOUD DEPLOYMENTS BECOME EVEN MORE MAINSTREAM

IN OUR 4TH ANNUAL STATE OF THE WAN REPORT

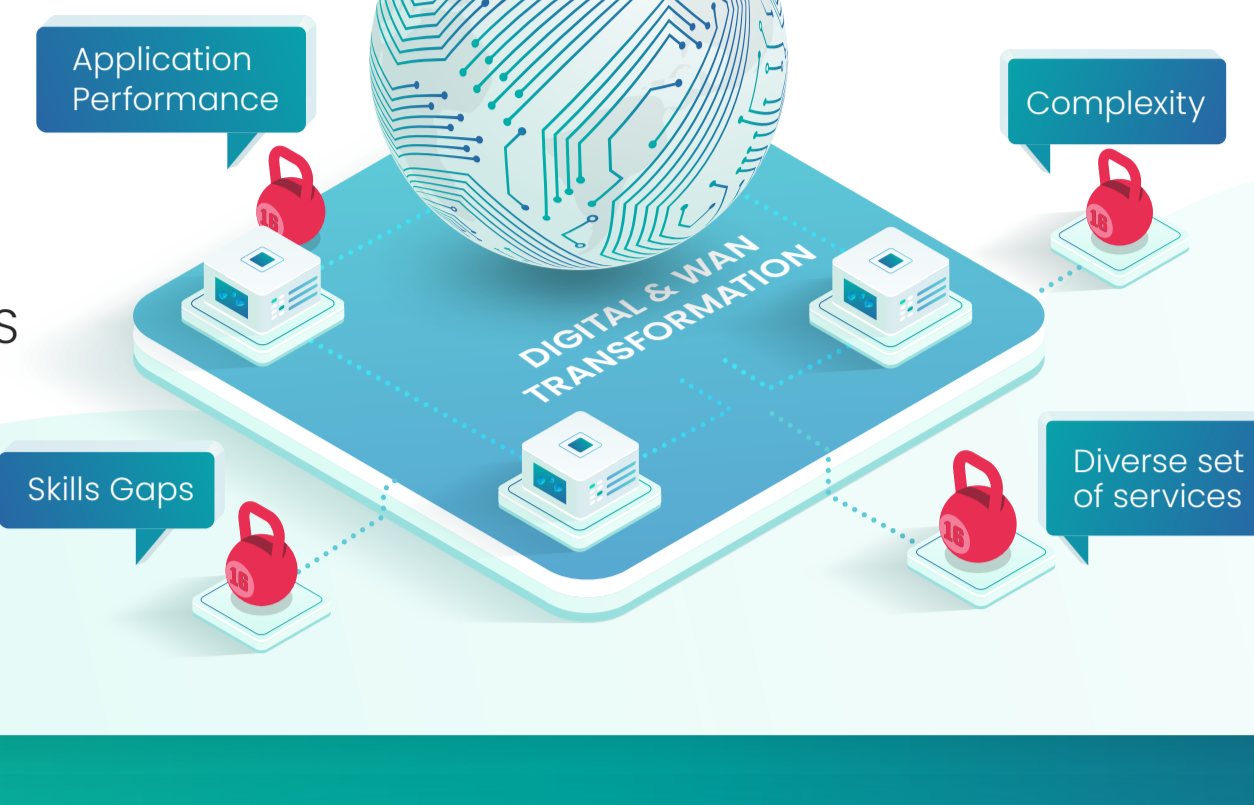


Network performance and complexity still remains a challenge.



Understand their WAN challenges, priorities & plans for 2020 and beyond.

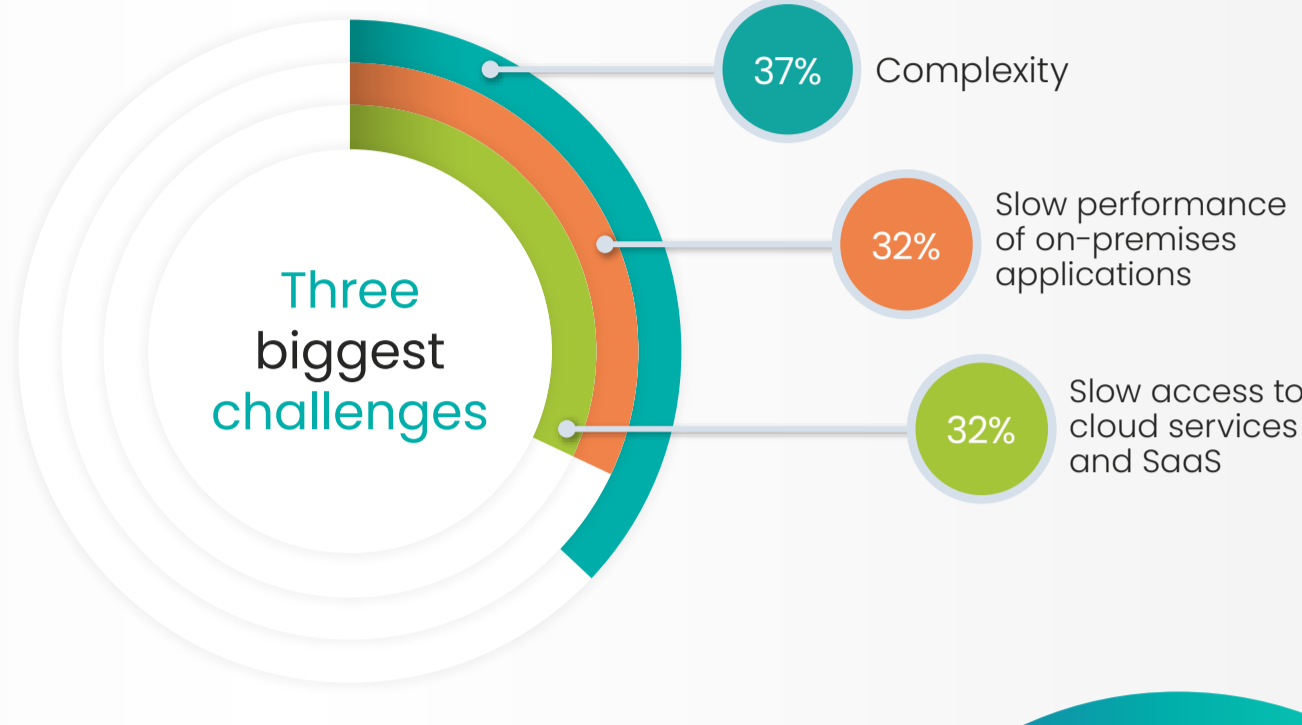
A COMMON THEME IS



The WAN is expected to be a catalyst for Digital and WAN Transformation.

COMPLEXITY IMPACTS PERFORMANCE

Operational complexity is the biggest hurdle to WAN Transformation. The two are interrelated, in that an overly complex infrastructure will negatively impact performance, but as we'll see, IT is investing to resolve this.



9% Only 9% of respondents state that they have no issues.

Complexity is the new lead concern, followed by performance of both on-prem and cloud applications. This replaces cost.

ADDRESSING APPLICATION PERFORMANCE ISSUES

Performance, security, and user-experience are top administrative nightmares. The telco managed service experience still sucks! Explore better-than-telco alternatives.

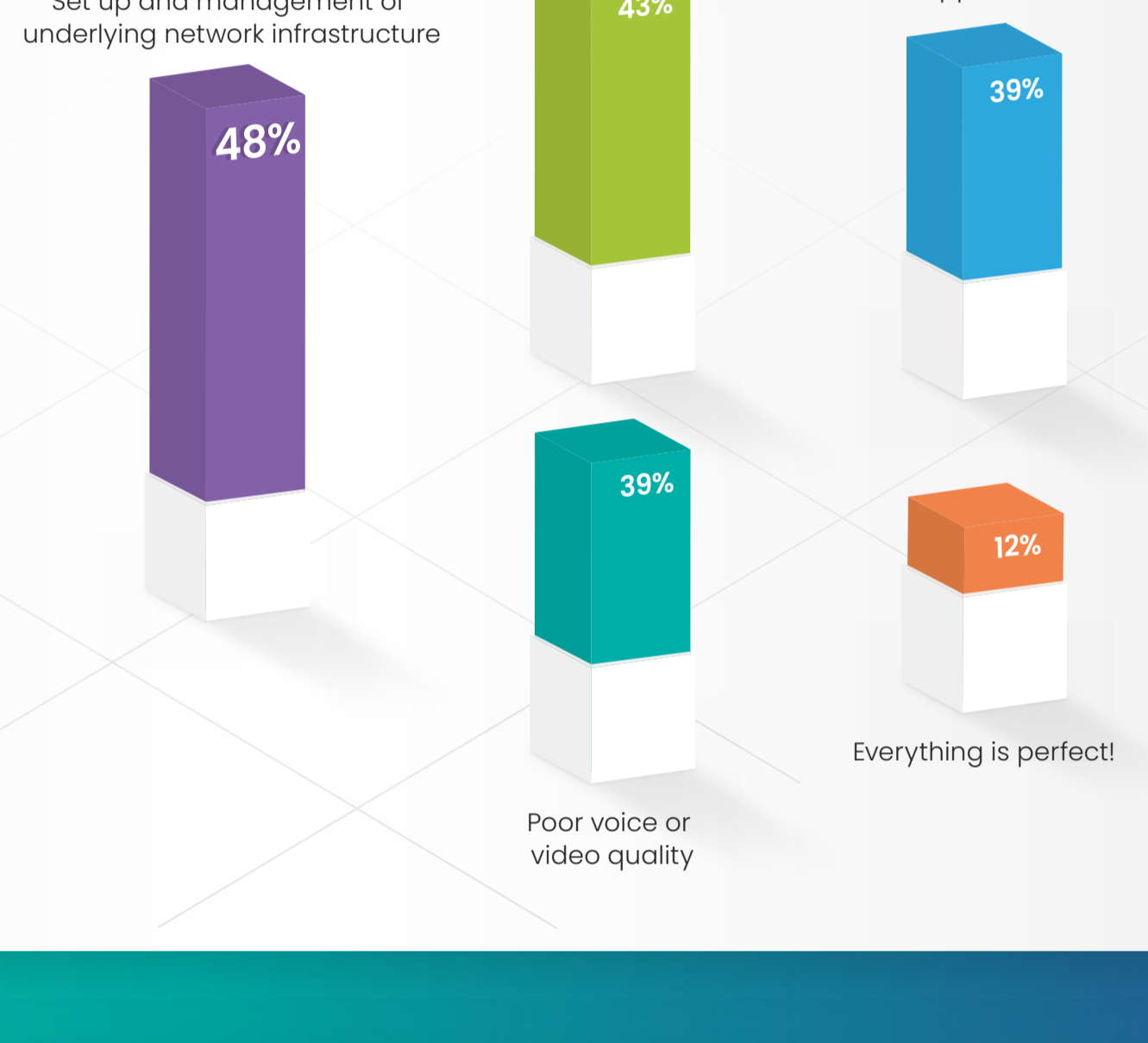
Addressing poor user experience for remote and mobile users and for users at the branch, followed by issues with the cloud and SaaS application origins, continue to be the largest areas of time investment. Managing telcos is also a concern.



UNIFIED COMMUNICATIONS AS-A-SERVICE A PERENNIAL CHALLENGE

The network is increasingly strategic to the performance of real-time voice and video.

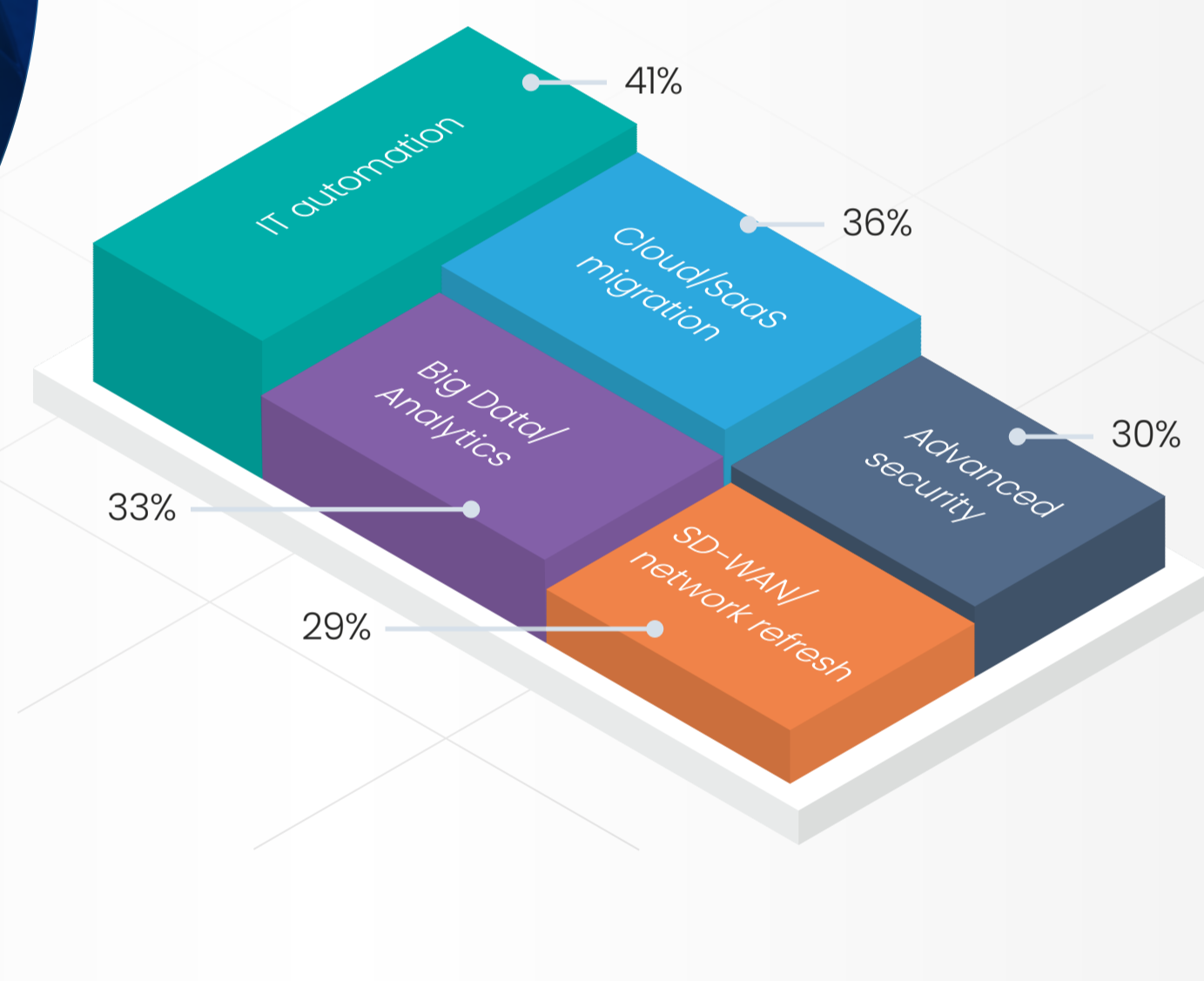
The top challenge, new this year, is set-up and management, highlighting network complexity and performance. Lag/delay in communication was second.



AUTOMATION IS KEY

Automation is a big driver for IT transformation, with application modernization being a huge focus. The network is either an enabler or a bottleneck for almost all major IT initiatives.

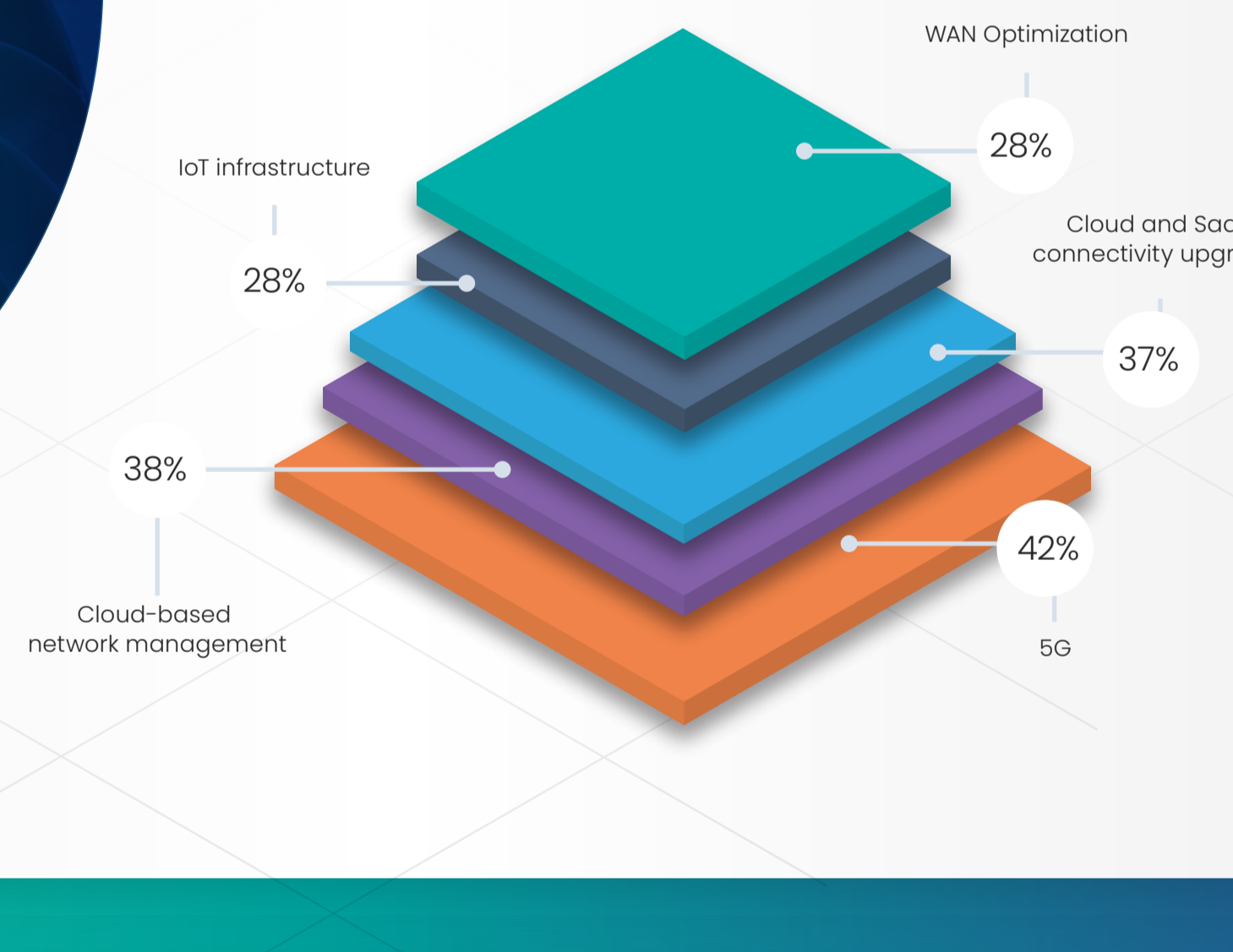
Investment in automation is #1, followed by continued focus on the cloud, analytics, and security.



5G ON THE RISE

Network initiatives span the edge, the core, and the cloud. Successful organization will take a cloud-first approach to the WAN.

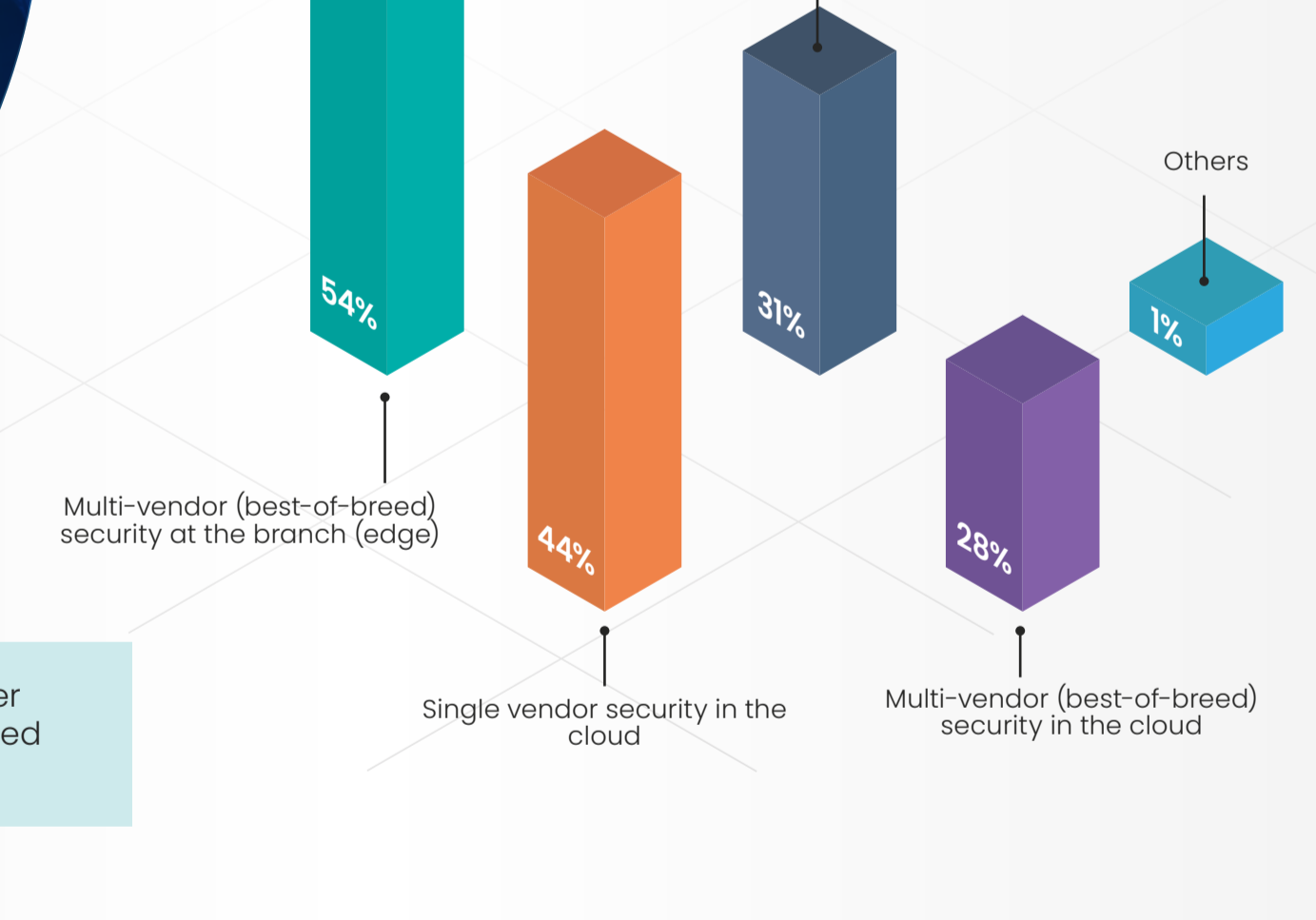
5G receiving interest as a potential primary form of SD-WAN connectivity.



SECURITY AND SD-WAN CONVERGENCE

End-to-end security remains a focus, while hybrid models that deliver flexibility and cloud deliver flexibility. SASE is the new buzzword and managed security is evolving.

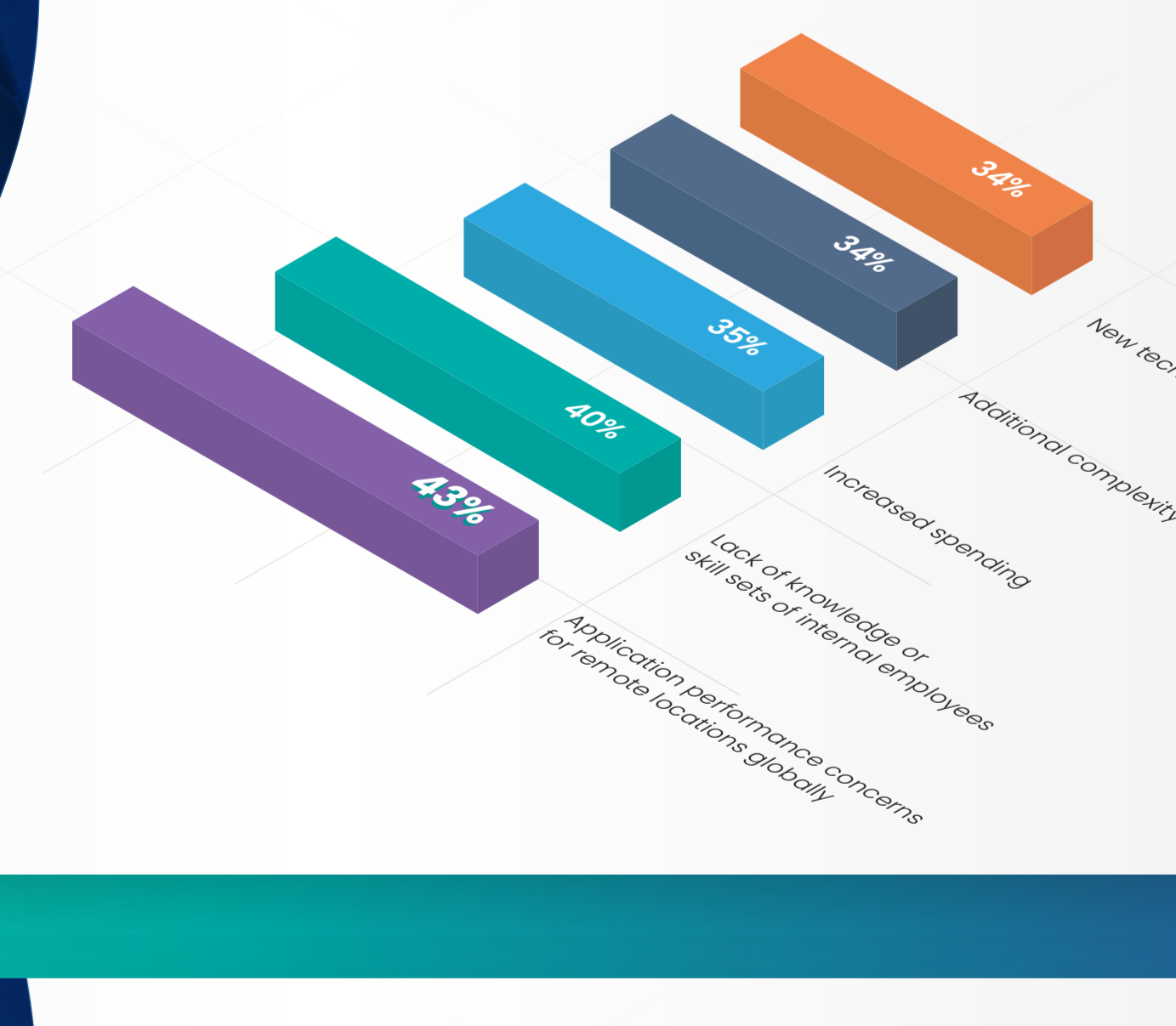
84% Increasing number open to a managed security solution
Managed firewall



REMOVE SD-WAN BARRIERS

Performance concerns can cause hesitancy to migrate off MPLS. Cost models and a DIY, As-a-Service OpEx and subscription options can de-risk adoption and increase flexibility.

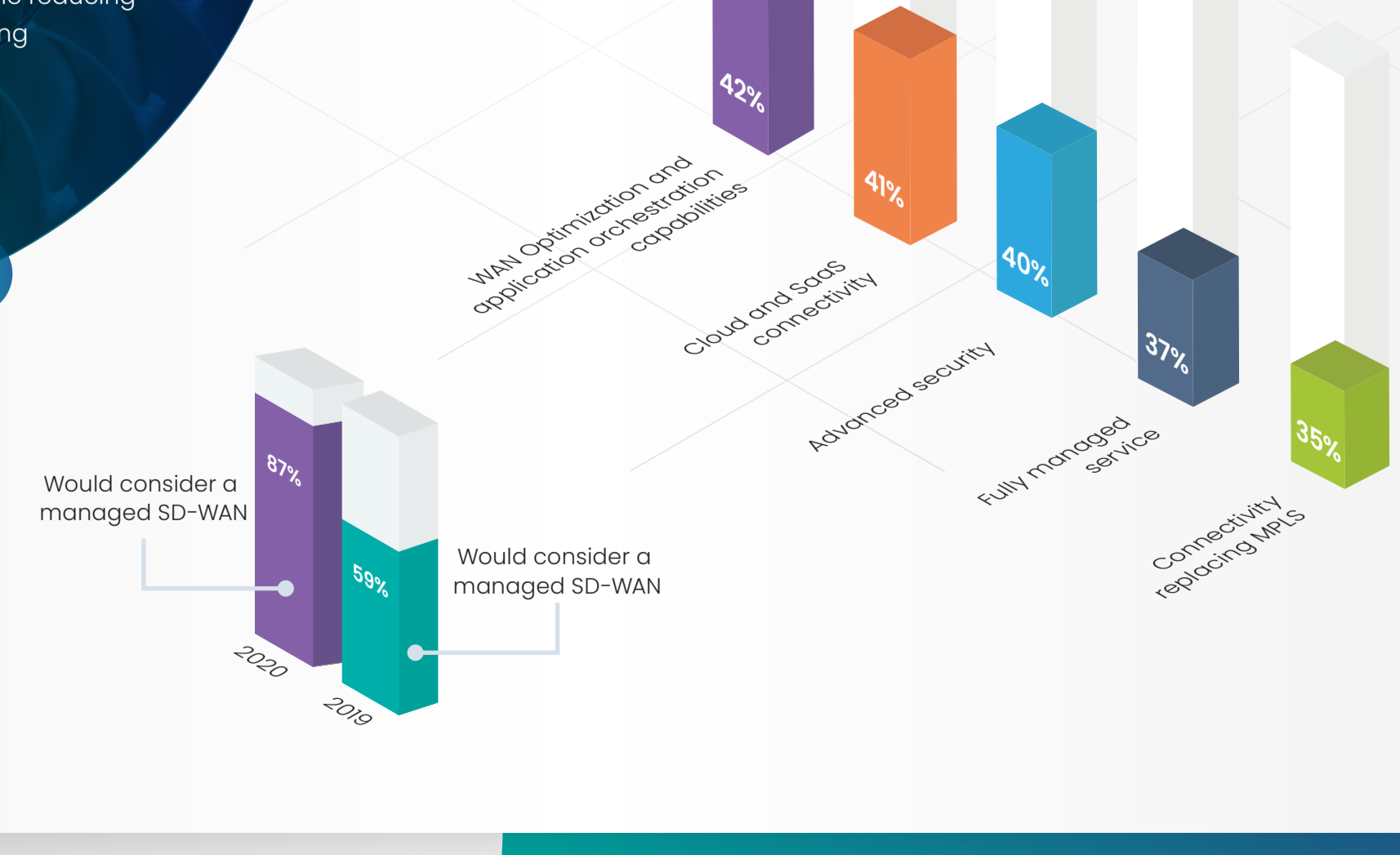
Application performance concerns now trump cost and knowledge gaps.



CONSIDER A MANAGED SD-WAN

The major advantage of a managed service is that it can offer these features, while reducing operational complexity and ensuring performance.

IT organizations are looking for their adopted SD-WAN deployment to integrate diverse services.



WHY ARYAKA

Aryaka is the leader and first to deliver Unified SASE as a Service, the only SASE solution designed and built to deliver performance, agility, simplicity and security without tradeoffs. Aryaka meets customers where they are on their unique SASE journeys, enabling them to seamlessly modernize, optimize and transform their networking and security environments. Aryaka's flexible delivery options empower enterprises to choose their preferred approach for implementation and management. Hundreds of global enterprises, including several in the Fortune 100, depend on Aryaka for cloud-based software-defined networking and security services. For more on Aryaka, please visit www.aryaka.com.



Contact Aryaka to Start Your WAN Transformation